

VERANDA

SUMMER ON THE WATER

CHIC RETREATS DESIGNED
WITH LEISURE IN MIND



Inside
Legendary
**YACHT
CLUBS**
Around
the World

**CLASSIC
ISLAND STYLE
FOR TERRACES
& PATIOS**



The V List

GUEST BOOK

Suite Retreat

Welcome weekend guests with rooms that recall the ease—and elegance—of summer houses of old.

SOFT LANDING
Pindler's new matelasse fabrics mimic the cozy, cushioned texture of their quilted French nappes. Available in stripes and solids.

1. Rockland and Thorofare fabrics, to the trade, pindler.com. 2. Mark D. Sikes Signature No.1 swing-arm sconce, \$500; build.com. 3. Weathered Oak chest, \$3,694; modernhistoryhome.com. 4. Maison Franc Lavender wands, \$50 each; bergdorfgoodman.com. 5. Matteo robe, \$185; metouk.com. 6. Jasmine carafe and tumbler, \$210; william yeowardcrystal.com. (In the Bedroom: Wallpaper; Madecox. Headboard and shams fabric; Pindler. Sheets; Annie Selke. Blanket, Brahm's Mount. Throw; Sferra. Table lamp; Circa Lighting. Table; Chebaa Textiles.)

LOOKING AHEAD

BLUE STREAK

Coming in hot: Turquoise gems and jewelry offer dazzling reminders of the season's sun-kissed waters.

1. Petals necklace in 18-karat rose gold with diamonds, turquoise, and mother-of-pearl, \$2,450; robertocoin.com. 2. Diamond and Turquoise earrings in 18-karat white gold, \$49,500; ethomaris.com. 3. Turquoise Branch ring, \$1,898; janepepajewelry.com. 4. Boat Link bracelet, \$8,950; seamanschapps.com. 5. Xpandable Turquoise bracelets, from \$25,600; 855-570-9900. 6. Day Date 36 watch in yellow gold with diamonds, \$56,350; rolex.com.

18 VERANDA

PRODUCED BY Rachael Burrow AND Doyle Wood



Small Pillow:
6443-Rockland,
Color Papava



Large Pillow:
6443-Rockland,
Color Papaya



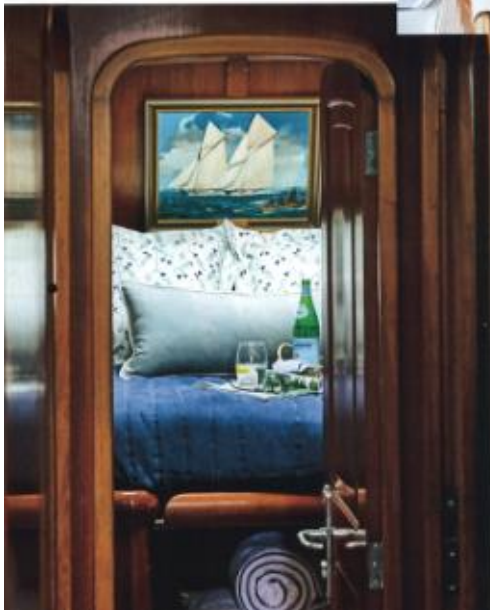
Headboard:
6443-Rockland,
Color Papaya

BEDROOM IMAGE: LAVENDER WANDS AND BOAT LINK BRACELET: DAVID LEWIS TAYLOR

Hundley Hilton Interiors (Birmingham, AL)



A spectrum of blues, found in textiles, nautical paintings, and a few accessories... energize the interiors with crisp, understated elegance.



TED HOOD: A FIRST-RATE PIONEER

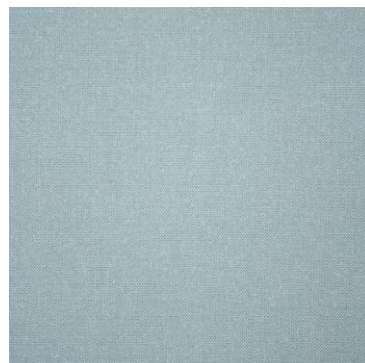
SNOWHAWK, a 54-foot sailing yacht designed by legendary boatbuilder Ted Hood, was built in 1989 by Hood's company, Little Harbor Yachts. Hood cut his teeth in the yacht business as a sailmaker in Marblehead, Massachusetts. After revolutionizing the way sailcloth is woven to enhance its strength and durability, he developed yachting innovations like the Seafurl and Stoway mast-roller reefing systems for cruising.

Long before he was a yacht designer, Hood was an accomplished sailor in his own right. After serving in the Navy during World War II, he



Yacht designer and innovator Ted Hood at the helm of *Courageous* in Massachusetts, 1988.

stacked up numerous victories on the water, including the America's Cup in 1974. Although Little Harbor Yachts has ceased production, Hood's shipyard in Portsmouth, Rhode Island, is owned by Hinckley and is one of the largest yacht service operations on the East Coast.



Drapery:
6069-Walden,
Color Spa
(Sunbrella)



**"I suppose you could say I've been
dreaming about boats my whole life."**

East Coast from the Bahamas to Maine and back again more than 20 times, first on the 46-foot *Caroline*, then on *Smokesawak*, a 64-foot Little Harbor yacht designed and built in 1989 by legendary boatbuilder Ted Hood (see pg. 55), which Pete bought in 1991.

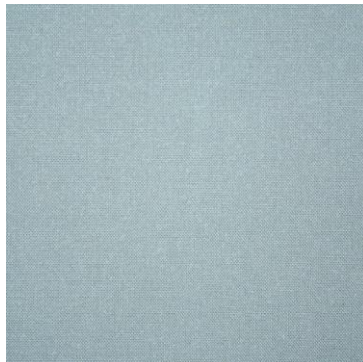
On the water, where the ever-changing home base and delicate dance between wind and sails proved a true test of the family's flexibility, Caroline's "go with the flow" marriage mantra became a whole new way of life for the Slosses. "You couldn't be fussy on the boat. It could be hot, it could be cold, and there wasn't much in the way of privacy," says Ratliff of the close quarters. Furthermore, "we'd sail into a different port each night, and my parents were always making new friends. Mom would go into town to the beauty parlor and invite new

people over. We just had to embrace the spontaneity," says Leigh Sloss Corra, the youngest of the three daughters.

Although they learned to love the serendipitous twirls and dips along their voyages, the Sloss sisters also came to crave the slow-dance sway that governed their days. "We would read and nap and eat and drink and visit and watch the sunset and stargaze and learn to be quiet together, soaking up the peaceful beauty of our surroundings," says Cathy Sloss Jones, the eldest daughter. "Everyone had a role. Once our parents trusted us at the helm, they became the nappers on the boat," says Corra. While each night may have been different, every year was the same. "We would stop at the same ports and restaurants each year and see the same friends," she adds.



TOP: The banquette pillow fabric and flange trim is by Lee Jofa.
ABOVE: Pete Sloss following his joy in 1980.



Drapery:
6069-Walden,
Color Spa
(Sunbrella)