

THE VOICE OF THE HEARTH, BARBECUE AND PATIO INDUSTRIES

JULY 2018

HEARTH & HOME



FABRICS FOR A NEW SEASON

There are no limits to creativity, performance, and comfort in the latest outdoor fabrics.



By Mark Brock

Once again, casual fabric designers have been hard at work for a new season, creating textiles that are more beautiful, more comfortable, and more durable than ever before. It is truly an embarrassment of riches for specialty retailers who will have virtually boundless choices when it comes to selecting casual fabrics for merchandising showrooms and encouraging consumers

to lay down hard-earned cash for furniture, fabrics, and accessories.

As the industry's leading casual furniture fabrics house, Glen Raven Custom Fabrics is launching the "Sunbrella Pure" collection that draws inspirations from nature and explores how everyday necessities can be elevated through design. For Outdura, considered the industry's second largest provider of solution-dyed acrylic fabrics, it was fun in the backyard that inspired

its latest collection, appropriately named "Pool Side Fun," merging the whimsical with the sophisticated.

Luxury performance leader, Perennials, is featuring a return to the classics with its soothing collection, "Natural Selection," featuring soft textures and easy-to-use patterns in a variety of new colorways. Designers at Silver State looked to the classic Hollywood film, "Roman Holiday," for a theme that ties together its latest



collection of Alaxi fabrics made with Sunbrella yarns, imagining Gregory Peck and Audrey Hepburn enjoying fabrics that reflect paintings and sculptures.

Tempotest Home, the Italian-based provider of solution-dyed fabrics, drew upon international inspirations with its new collection, “Bel Mondo” (Beautiful World), encompassing a color palette inspired by nature, ranging from sundrenched vistas to cool waters. Pindler remains a

style-and trend-setter for the coming season, offering fabrics with inspirations that range from nature and American history to sea life and architecture. Pindler has partnered with Sunbrella fabrics and designer Richard Frinier in some of its latest offerings.

For the 2019 season, Bella-Dura is making it even easier for specialty retailers to offer consumers expanded flexibility in fabric selections. Dozens of new options are being added to the Bella-Dura’s By The

Yard Collection that features performance textiles in a variety of textures, stripes, and patterns ready to ship within 24 hours.

Phifer’s 2018-2019 Outdoor Color Collections focus on brilliant colors and classically modern patterns that appeal to today’s layered outdoor decorating style. Phifer is introducing seven new color palettes that span Phifertex, the industry leading sling fabric, and GeoBella, a fabric woven from recycled Olefin yarns.

Nature, Architecture, History, and More Inspire Pindler Fabrics

When it comes to inspired fabric collections, influences found in fabrics from Pindler are virtually unrivaled. From nature to architecture and from history to ageless craftsmanship, Pindler's collections continue as style and taste trendsetters.

Exclusive Sunbelievable Collection – The Exclusive Sunbelievable™ Collection from Pindler is a selection of modern, vibrant colors perfect for any indoor or outdoor setting. Woven from solution-dyed acrylic and polyester yarns to be fade-resistant and easy to clean, this collection offers a myriad of bright and fresh colorways.

“We’re pleased to share this incredible new indoor and outdoor collection to the design trade,” said Sarah Williamson, design manager of Pindler. “The Exclusive Sunbelievable Collection combines two major design trends – fresh and bright colorways and performance fabrics – both in high demand within the marketplace. We’re excited to present this collection that our design team has worked so hard to create.”

Patterns in the Exclusive Sunbelievable Collection include Echo, which is a midscale geometric, modern design with surface dimension made of fine and boucle yarns. The Stillwater pattern is a midscale shibori tie dye design that offers transitional appeal and bold color. Maytime is small scale, geometric tile design, while Pescador is a small scale, nautical design with a playful fish motif.

Architecture by Richard Frinier – Designed by the internationally recognized designer Richard Frinier, the Architecture Collection echoes architectural design elements found in surface and façade design.

“I became inspired by the growing architectural movement that involves the surfacing and resurfacing of buildings around the world,” Frinier said. “Captivated

by the many unique layers and materials, such as metals, glass, concrete and other new and repurposed materials, I created blueprints of photographs of buildings and translated them into textiles.”

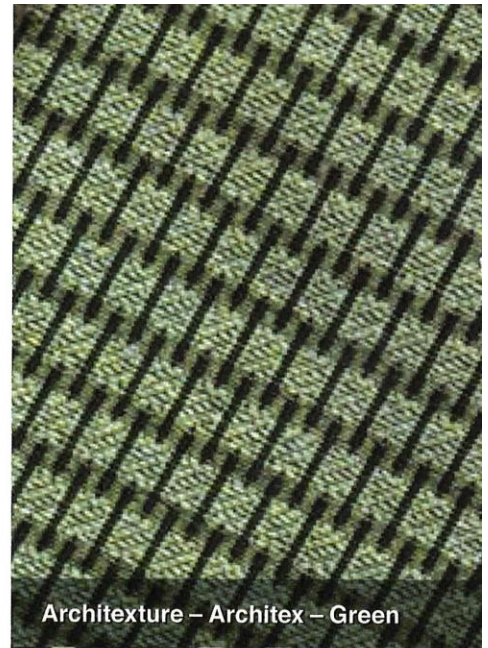
Architectural impressions continued to manifest throughout Frinier’s design process and the result is a versatile range of textiles with distinctive constructions, textures, patterns, and colors.

Pendleton Collection by Sunbrella – Pendleton by Sunbrella includes 44 patterns and is grounded by four hero patterns: Lahaina, Eagle Rock, Canyonlands, and Zapotec.

“This collection was brought to life through the combination of two heritage brands, calling upon Pendleton Woolen Mills’ distinct aesthetic and Sunbrella fabrics’ enduring performance qualities to recreate classic American patterns,” Williamson said. “Pendleton owns and operates weaving mills in Oregon and Washington, and the process to produce these fabrics is under the watchful eyes of Pendleton craftsmen.”

The Pendleton Collection by Sunbrella unfolds across American history. The Lahaina pattern combines traditional tribal-influenced designs from the Hawaiian main island with blue and turquoise representing the beaches near Lahaina, Maui. The Eagle Rock pattern incorporates Native American design elements and weaving traditions of the Southwest.

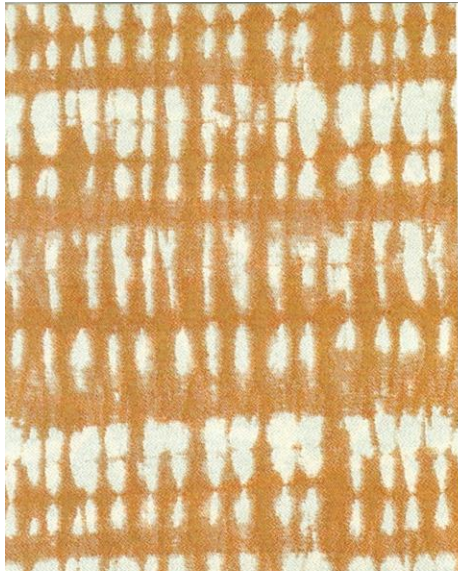
Canyonlands uses a modern ombré weave to create rich layers that mimic the movement of sunlight dancing across the canyons. Zapotec gets its name from the Zapotec Indians of Oaxaca, Mexico, who established a tradition of weaving colorful cloths using natural dyes from plants and animals. The pattern features classic geometric designs and elegant simplicity.



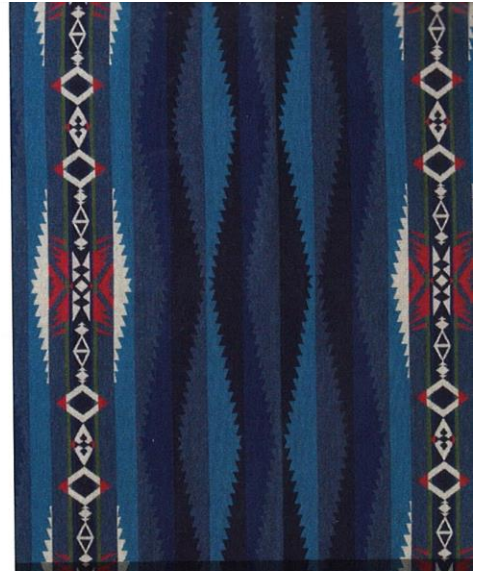
Architecture – Architex – Green



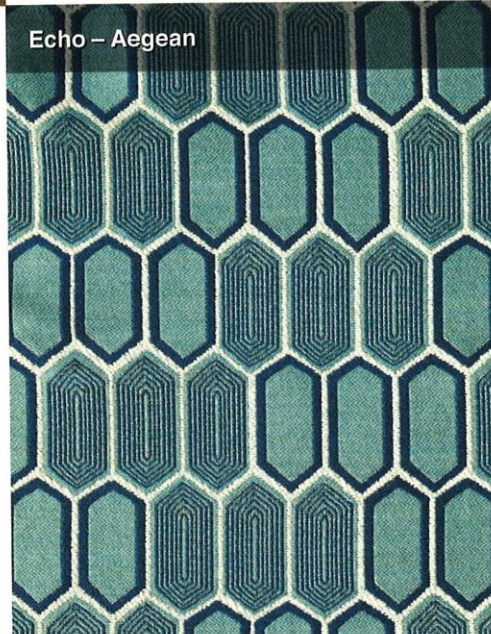
Architecture – NYC – Skyline



Stillwater - Papaya



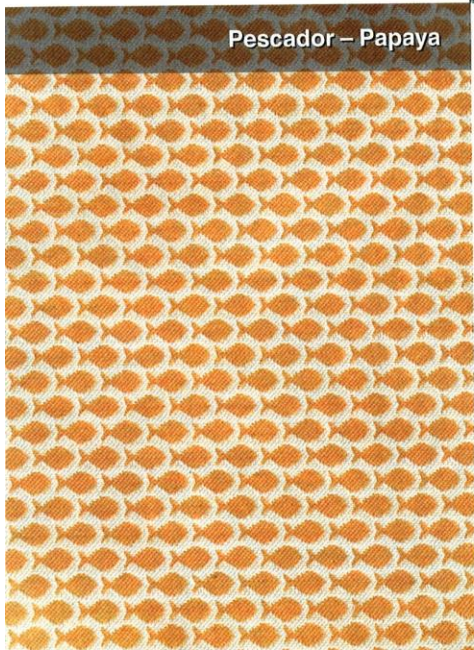
Pendleton - Lahaina - Turquoise



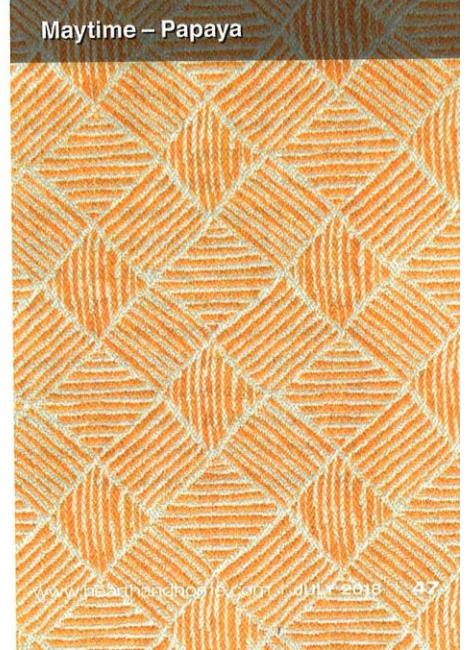
Echo - Aegean



Pendleton - Zapotec - Adobe



Pescador - Papaya



Maytime - Papaya